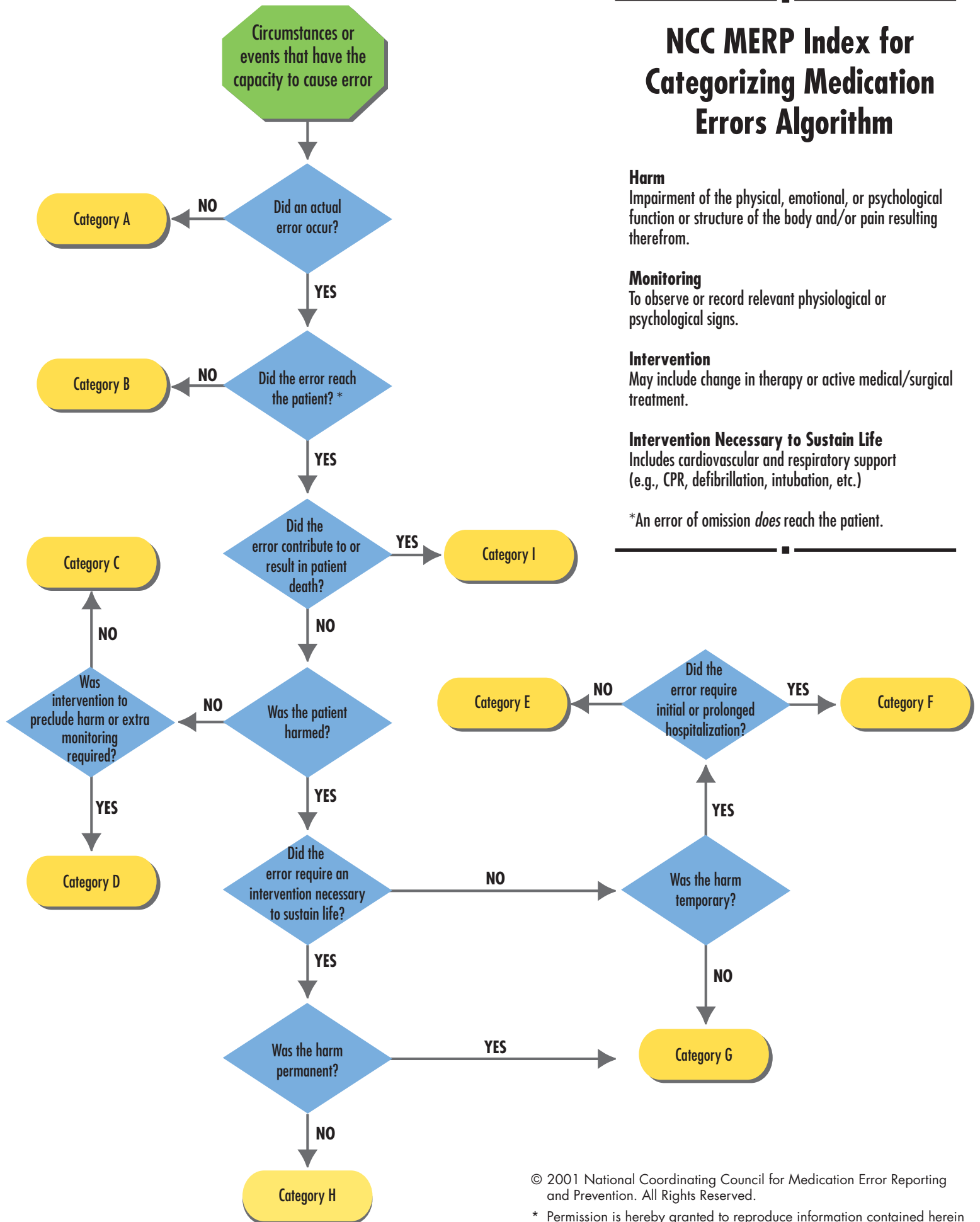


# NCC MERP Index for Categorizing Medication Errors Algorithm



**Harm**  
Impairment of the physical, emotional, or psychological function or structure of the body and/or pain resulting therefrom.

**Monitoring**  
To observe or record relevant physiological or psychological signs.

**Intervention**  
May include change in therapy or active medical/surgical treatment.

**Intervention Necessary to Sustain Life**  
Includes cardiovascular and respiratory support (e.g., CPR, defibrillation, intubation, etc.)

\*An error of omission *does* reach the patient.